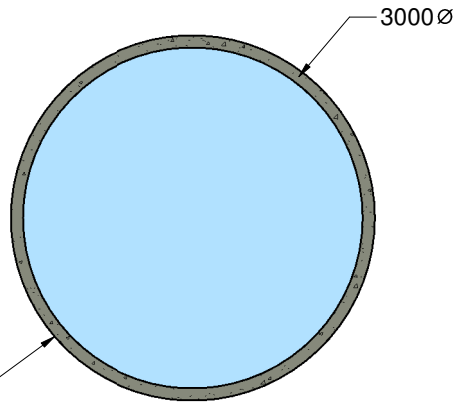


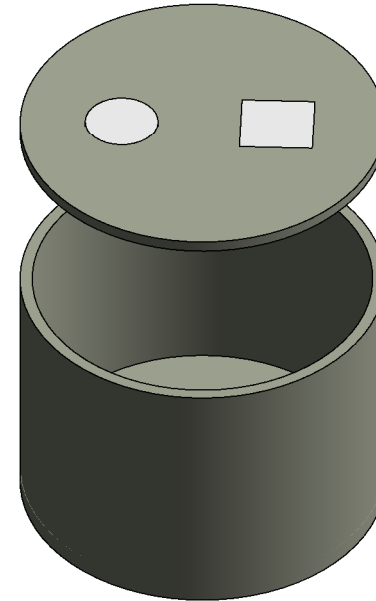
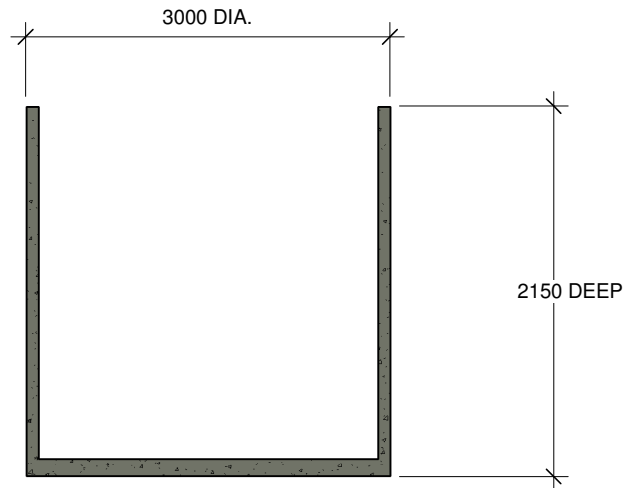
PLAN



PRE-CAST TANK

**KIELY PRECAST TANK
12300 LITRE**

SECTION



ISOMETRIC

NOTES:

1. Drawing not to scale.
2. Safety Regulations to be observed at all times.
3. Client requirements to be noted with order.
4. All Civil works to be carried out by client.
5. All tanks to be placed on a level firm compacted surface free of water.
6. Cleaning/desludging to be carried out by suitable waste management companies.

NOTE:

EXCAVATION DIMENSIONS:
Dig a hole 4.5m in diameter.
Depth depends on inlet pipe invert.

Tank to be filled with water and backfilled with suitable material.



Courtbrack, Blarney, Co. Cork.
Tel: 021 4385872 Fax: 021 4381644
email: info@wmkiely.ie
Vat No. 4527967U

DESCRIPTION:
12300 LITRE TANK

TANK DIMENSIONS:
3000mm DIAMETER x 2150mm DEEP

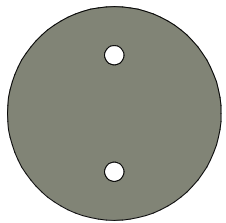
- SUITABLE FOR:
- SEPTIC TANKS
 - GREASE TRAPS
 - OIL INTERCEPTORS
 - EFFLUENT STORAGE
 - WATER STORAGE

INLET & OUTLETS CAN BE CORED TO SUIT

TANK WEIGHT: 7000 KG'S

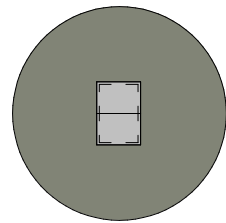
COVER WEIGHT: 2500 KG'S

COVER LOADING: 4T POINT LOAD (TRACTOR SPEC).



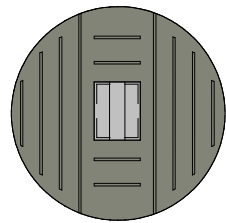
Cover Type A
Weight - 2500kg
(Plain Access Cover for Vacuum Suction)

NOTE: 150mm Deep



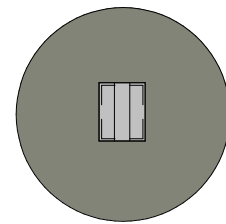
Cover Type B
Weight - 2500kg
(Galvanised Double Door Cover suitable for Dual Pump Station)

NOTE: 150mm Deep



Cover Type C
Weight - 3000kg
(Galvanised Slatted Door in totally slatted concrete cover Heavy Duty)

NOTE: Covers 9"/230mm deep



Cover Type D
Weight - 2500kg
(Galvanised Slatted Door in plain cover)

NOTE: 150mm Deep